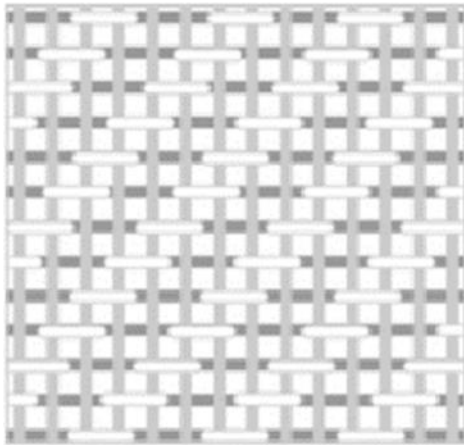


Crows Foot Weave (CFW) Belt



2x2 broken twill fabric weave which has each warp (longitudinal) thread passing over/under two weft (transverse) threads at a time.

Features

CFW Rubber Conveyor Belt, designed for arduous application, gives outstanding resistance to rip & tear, and has 5 times the strength of conventional belts. It is manufactured with a unique EP carcass, which with 50% more threads (ends) in the warp, 40% heavier weft yarn, 20% more weft threads (picks) and over twice the strength in the weft.

Advantage: Superior Rip & Tear Resistance, Low Elongation, High Strength & Adhesion, Good Impact Resistance.

Cover Grade: Available in various cover grade, but due to the nature of applications where CFW conveyor belt is used, high grade covers are generally recommended.

Technical Indexes

Type		Tensile at Break	Elongation at Break
Unit		N/mm	%
EP200-CFW	Warp	240	≥ 14
	Weft	75	≤ 40
EP250-CFW	Warp	300	≥ 14
	Weft	90	≤ 45
EP300-CFW	Warp	350	≥ 14
	Weft	105	≤ 45
EP350-CFW	Warp	410	≥ 14
	Weft	115	≤ 45
EP400-CFW	Warp	480	≥ 14
	Weft	115	≤ 45
EP450-CFW	Warp	520	≥ 14
	Weft	115	≤ 45
EP500-CFW	Warp	610	≥ 14
	Weft	115	≤ 40