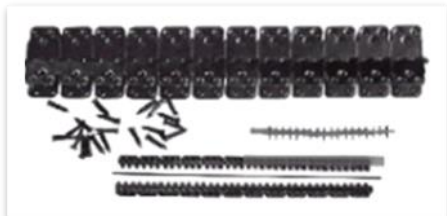


FASTENERS

Fasteners for heavy duty belts

Rivet Fasteners



MS Fasteners



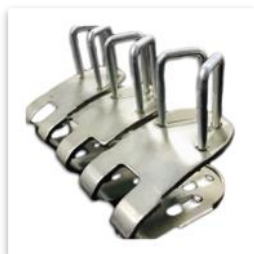
Titan Series Fasteners



Bolt Plate Fasteners



V6 Fasteners



Fasteners for light duty belts

Self-Lock Fasteners



MR Fasteners



Flexible Steel Fasteners



Carded Hook Fasteners



FAST REPAIR KITS

Your Swift Conveyor Belt Repair Solution

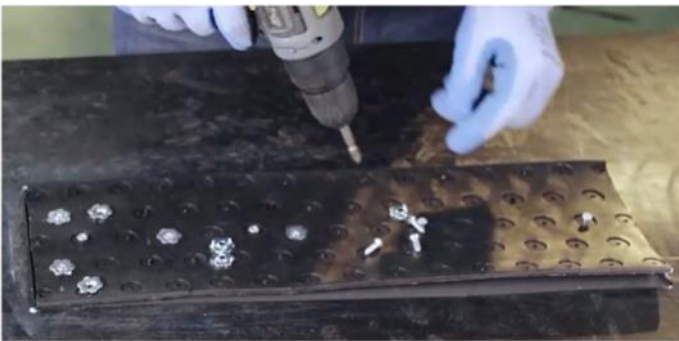
‘ Chemical-Free, Tool-Free — Day or Night, Any Weather ’

It can repair:

- Longitudinal Rip
- Crosswise Rip
- Belt edge broken
- Belt holes and tears

Suitable industry:

- Quarries
- Mining
- Cement
- Power Plant...



Standard Fast Repair Kits

- ※ 20 m per kit with 3000 screws + PZ bits + over-length screws
- ※ Every kit includes over-length screws: 5 PCS /m, 1 PC PZ bit /m

Emergency Fast Repair Kits

- ※ 2 m per kit with 300 screws + 2 PZ bits + 10 over-length screws

Choose Screws in Group A or B, Material, and Grade:-

Screw Group A

- * 600 screws 5 x 10 mm
- * 900 screws 5 x 12 mm
- * 600 screws 5 x 14 mm
- * 300 screws 5 x 16 mm
- * 300 screws 5 x 18 mm
- * 300 screws 5 x 20 mm

Screw Group B

- * 1050 screws 5 x 12 mm
- * 900 screws 5 x 14 mm
- * 450 screws 5 x 16 mm
- * 300 screws 5 x 18 mm
- * 300 screws 5 x 20 mm

Material: Carbon Steel Stainless Steel

Grade Selection for Fast Repair Kits

- AR | Abrasion Resistant
- HTR | Heat Resistant 200°C
- LTR | Cold Resistant -50°C
- OR | Oil Resistant
- FR | Fire Resistant ISO 340