



## **LIGHT DUTY BELT CONVEYOR AND PROCESS BELT**

**STANDARD INDUSTRIAL INC.**

[www.standard-a.com](http://www.standard-a.com)

Telephone: +86 21 6290 1212

Sales: [info@standard-a.com](mailto:info@standard-a.com)

# Light Duty Conveyor & Processing Belt

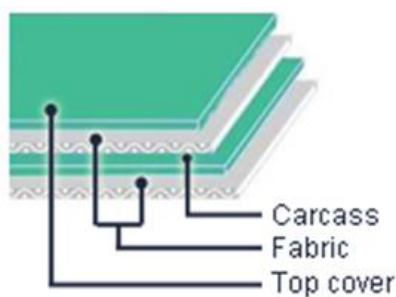
## DESCRIPTION

**Application:** Suitable for almost all the industries under roof.

**Fabric Carcass:** Polyester, Nylon, Cotton, etc.

**Surface Coating:** PVC, PU, PE, TPE, etc.

**Maximum Production Width:** up to 4000 mm (157.480 inches)



## EXPLANATION OF BELT CODE

Type of material												
Ply number												
Type of fabric												
Color												
Total thickness (mm/10)												
Top surface pattern												
Top cover thickness (mm/10)												
Bottom surface pattern												
Special characteristics												
C	2	5	-	G	20	-	S01	5	/	S00	A	

**Type of material:**

<b>C</b>	PVC
<b>U</b>	PU (polyurethane)
<b>E</b>	PE (polyethylene)
<b>T</b>	TPE polyethylene (Hytrel®)
<b>S</b>	Silicon
<b>P</b>	polyamide

**Type of fabric:**

<b>0</b>	Polyester spun, strong structure
<b>1</b>	Polyester multifilament
<b>2</b>	Polyester monofilament, with lateral stability, strong structure
<b>3</b>	Polyester / Cotton
<b>4</b>	Polyester spun
<b>5</b>	Polyester monofilament, with lateral stability
<b>6</b>	Cotton
<b>7</b>	Polyester multifilament, heavy construction, with lateral stability
<b>8</b>	Polyester multifilament, heavy construction
<b>M</b>	Felt

**Code of color:**

<b>T</b>	natural/transparent
<b>G</b>	green
<b>W</b>	white
<b>B</b>	black
<b>GR</b>	grey
<b>R</b>	red
<b>BR</b>	brown
<b>P</b>	petrol
<b>BL</b>	blue
<b>O</b>	orange

**Special characteristics (material):**

<b>O</b>	Oil resistant
<b>F</b>	flame resistant
<b>C</b>	Conductive( $10^5 \Omega$ )

**Special characteristics (fabric):**

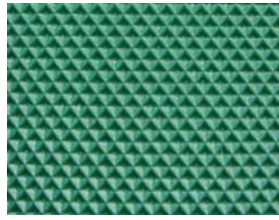
<b>A</b>	Anti-static carbon fiber
<b>D</b>	Low noise fabric
<b>I</b>	Impregnated fabric
<b>G</b>	Extra rigid fabric (Latitudinal thicker)
<b>L</b>	Low shrink rate fabric (Longitudinal stronger)



## SURFACE PATTERNS



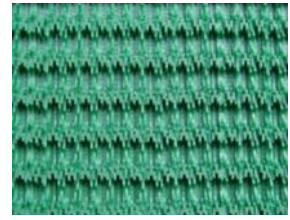
**0# Matt**  
*General*



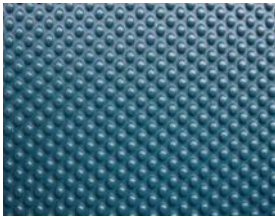
**1# Diamond**  
*Logistic/Food*



**2# Rough Fabric**  
*Logistic/Food*



**3# Grip Top**  
*Logistic/Airport*



**4# Round Nipple**  
*General*



**5# Coarse Texture**  
*Logistic/Treadmill*



**6# Saw Tooth**  
*Food*



**7# Golf**  
*Logistic/Treadmill*



**8# Long Stud**  
*Tabaco*



**9# Wavy Super Grip**  
*Logistic/Airport*



**10# Staggered Herringbone**  
*Agriculture*



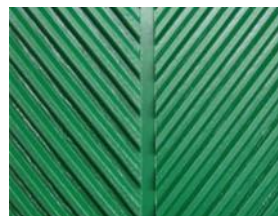
**11# Crescent**  
*Food*



**12# Mini Grip**  
*Logistic/Treadmill*



**13# Square 20mm**  
*Wood processing*



**14# Fishbone**  
*Wood/Fish processing*



**15# Small Golf**  
*Stone processing*



**16# Latitudinal Fishbone**  
*General*



**17# Shallow Diamond**  
*Logistic/Treadmill*



**19# Longitudinal Rib**  
*Logistic/Airport*



**20# Leather**  
*Treadmill*



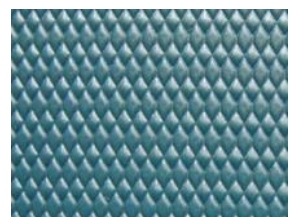
**21# Big Square 60mm**  
*Airport*



**22# Tooth one direction**  
*Stone processing*

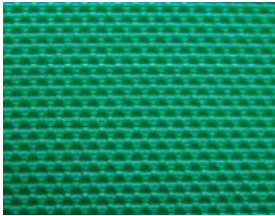


**23# Lattice**  
*Logistic/Airport*



**24# Low Grip**  
*Stone processing*





**25# Smooth Fabric**  
*General*



**26# Staggered Stud**  
*Tabaco*



**27# Capsule Stud**  
*Wood processing*



**28# Small Rhombus**  
*General*



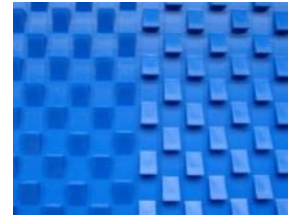
**29# Sandblast**  
*Logistic/Treadmill*



**30# Cross Rib**  
*Wood processing*



**31# Rough Matt**  
*General*



**32# Tooth two direction**  
*Stone processing*



**33# Small Diamond 1mm**  
*Food*



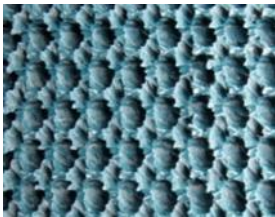
**34# Fine Matt**  
*General*



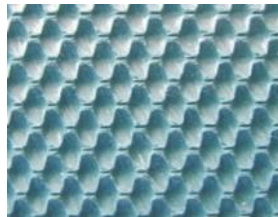
**35# Grinding Square**  
*Wood processing*



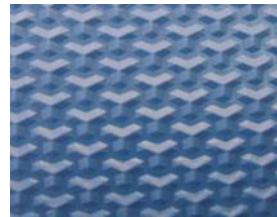
**36# Rice**  
*Food*



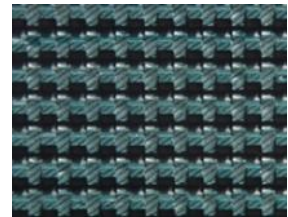
**37# Supper Grip Fabric**  
*Logistic/Packing*



**38# Mini Grip Fabric**  
*Logistic/Airport*



**39# Y Pattern**  
*Stone processing*



**40# Supper Grip**  
*Logistic*



**41# C Round Stud**  
*Tabaco*



**42# T Round Stud**  
*Tabaco*

## CUSTOMIZED PATTERNS:



**PU Solid Woven**  
*Leather/Metal cutting*



**ZipLink**  
*Easy & Fast Splicing*



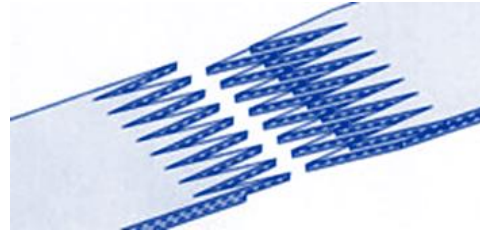
**Kevlar Fabric**  
*High strength, low elongation  
Wood chips conveying*

## JOINT METHODS

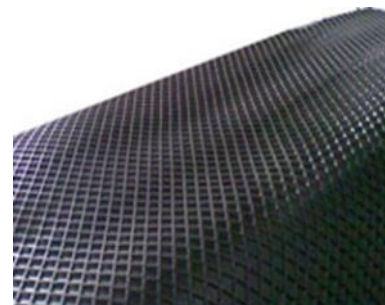
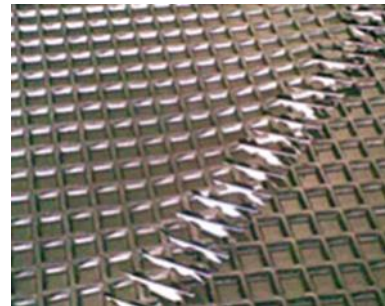
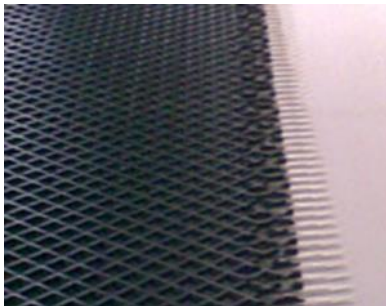
### Z Splice (*finger joining*)



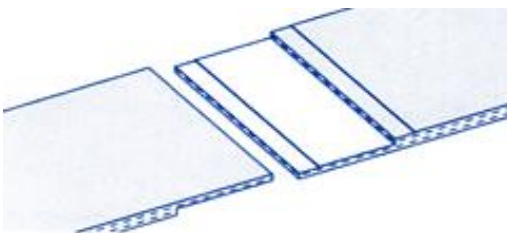
Single finger joint



Double finger joint



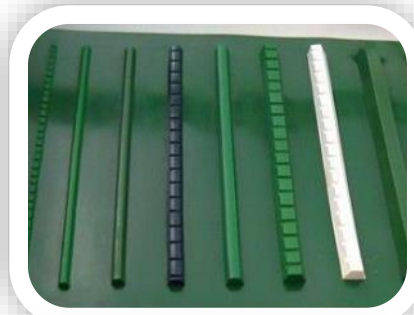
### Over Lap Joint



## Fastener Method



## CLEAT \ SIDEWALL \ PVC GUIDE





## PVC Interwoven Belt



**PVC Interwoven Belt** offers high service yield and is the best value for general conveying of most food and package handling applications.

### Carcass Range:

The single ply interwoven polyester construction provides a superior tear and gouge resistant carcass with the following allowable tension ratings in pounds per inch (Width) : 100 PIW, 120 PIW, 150 PIW, 200 PIW

### Surface Patterns:

Smooth, Crescent Top, Rough Top, Chevron Top, Friction Surface, Brushed, etc.

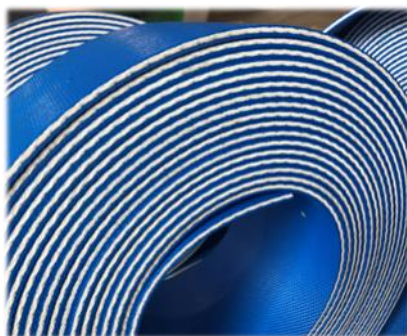
**Maximum Production Width:** 78 INCHES, or 2000MM

### Application:

- Packaging handling
- Inclines
- Parcel / Letter transporting
- Bulk materials
- Portable loaders
- Elevator belts
- Fruit / Vegetable packing
- Airport terminals
- Distribution centers
- Fertilizers
- Harvesting equipment
- Food processing
- Pharmaceuticals



## PVC Solid Woven Elevator Belt



### FEATURES

- Tight woven polyester carcass co-extruded with high quality PVC covers.
- Special designed surface increases the friction between belt and elevator pulley to reduce belt deviation.
- Good resistance to flame and abrasion, and anti-static
- Resistance to oils, grease, chemicals, corrosion, and mildew.
- Ideal for using in grain handling applications.
- No belt delamination occurs under normal operating conditions.

### TECHNICAL INDEX

Model	Color	Tensile Strength (N/mm)	Thickness (mm)	Elongation @ rated load (%)	Min. Pulley Diameter (mm)
PVC230	Blue White Black	400	5.0	$\leq 4.0$	300
PVC400		700	6.2		400
PVC520		900	7.8		500
PVC640		1100	8.8		700

Item	Unit	Value
Tensile Strength	MPa $\geq$	15
Adhesion Strength ( <i>Cover to Carcass</i> )	N/mm $\geq$	4.5
Elongation at Break	% $\geq$	300
Abrasion Loss	mm <sup>3</sup> $\leq$	100
Oil Resistance ( <i>Volume change rate</i> )	% $\leq$	20
Acid and Alkali Resistance ( <i>Volume change rate</i> )	% $\leq$	6
Average Flame Duration	s $\leq$	6
Electric Conductivity	$\Omega \leq$	3X10 <sup>8</sup>