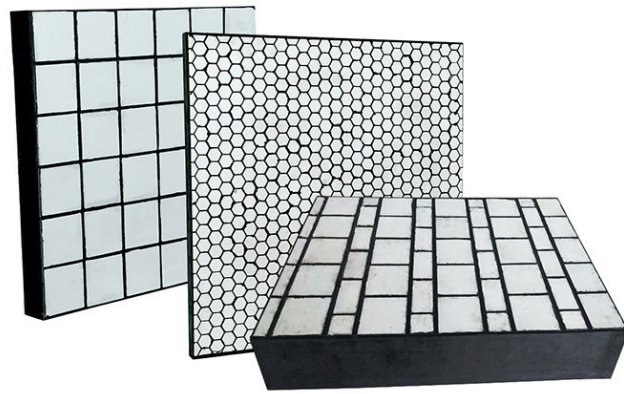


Ceramic Rubber Wear Liners

Feature:

- ◇ Superior wear resistance of high alumina ceramics.
- ◇ Energy-Absorbing rubber cushions, which are more impact resistant.
- ◇ Extend wear life & reduce maintenance and down time



Ceramic rubber liners combine a steel backing plate, alumina ceramic tiles, and a cushioning layer of rubber or polyurethane through a hot vulcanization process. This cushioning layer is key to preventing tile breakage.

-High Alumina Ceramics, 92% or 95% Al_2O_3

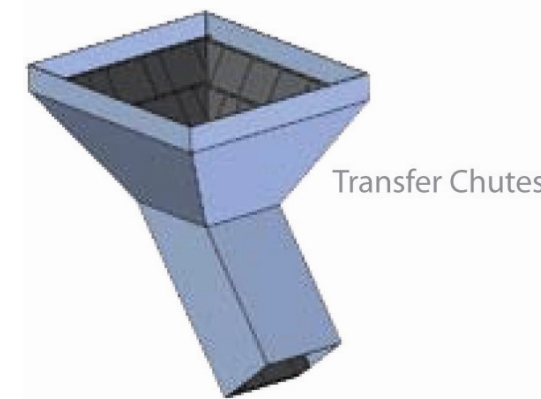
-Multi-shape available : available with square, rectangular, cylindrical, hexagonal, etc.

-Thickness, size and shape of ceramic are determined on the basis of application

Following information should be taken into consideration when selecting wear liner

- Material Type: coal, rocks, gold slurry, iron ore, etc.
- Particle Size
- Drop height
- Sliding wear or impact wear, impact angle

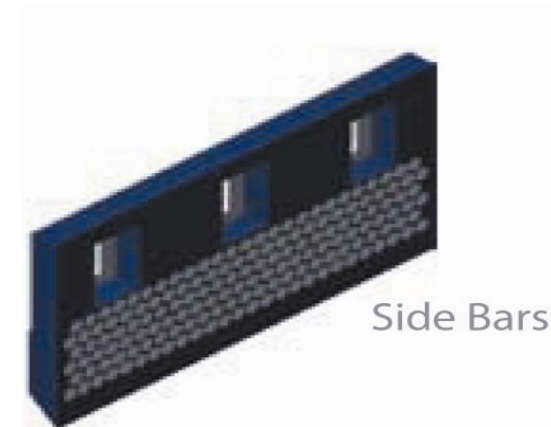
Application:



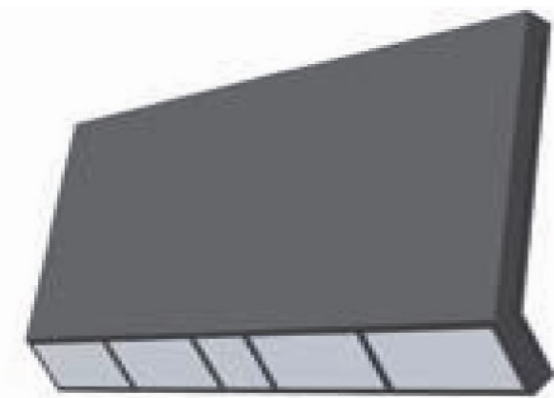
Transfer Chutes



Lining Pipes



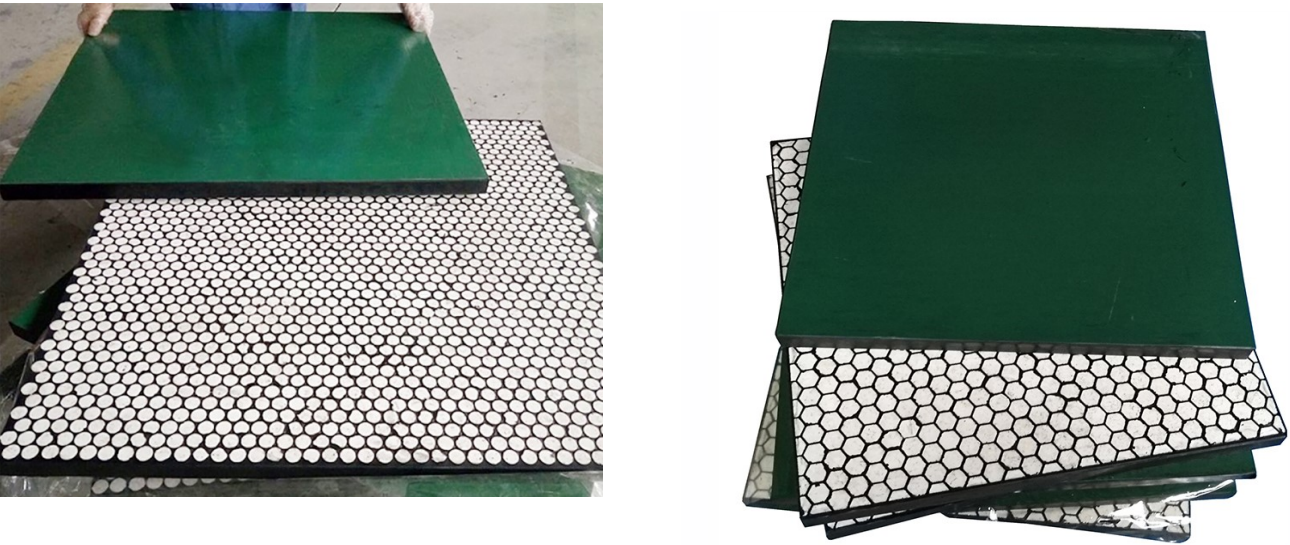
Side Bars



Ceramic rubber liners with countersunk are also available.



Ceramic Rubber Composite Lining with CN Bonding Layer



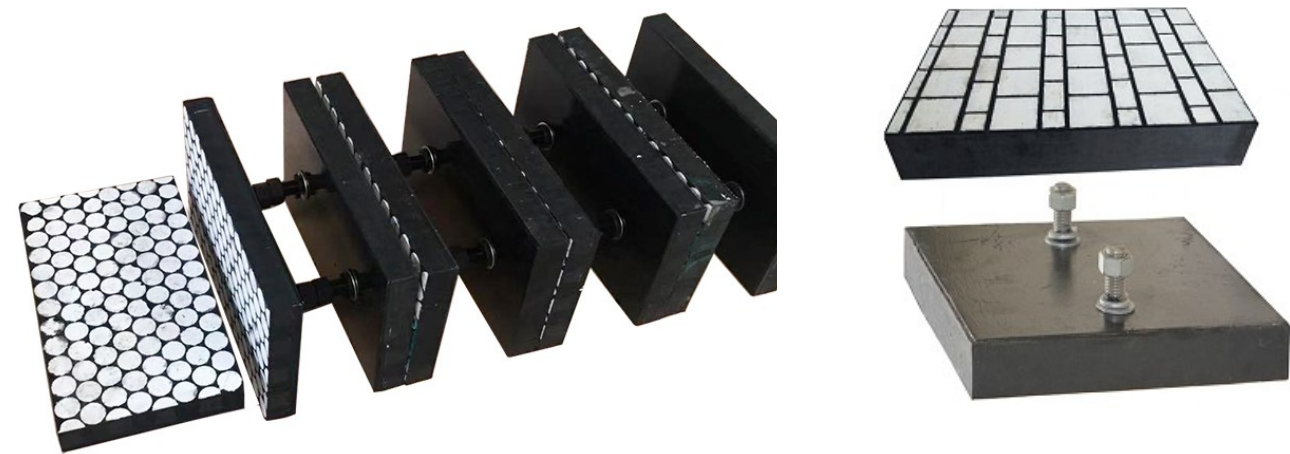
Standard Specification

Ceramic Liner Size (mm)	Ceramic Shape(mm)	Structure	Overall Thickness(mm)
500x500x8	Square, Cylindrical or Hexagonal	4mm ceramic on 4 mm rubber	8
500x500x10	Square, Cylindrical or Hexagonal	6mm ceramic on 4 mm rubber	10
500x500x14	Square, Cylindrical or Hexagonal	10mm ceramic on 4 mm rubber	14
500x500x20	Square, Cylindrical or Hexagonal	13mm ceramic on 7 mm rubber	20
500x500x25	Cylindrical or Hexagonal	20mm ceramic on 5mm rubber	25
500x500x30	Cylindrical or Hexagonal	25mm ceramic on 5mm rubber	30

Customized sizes and configuration are available as per request.

Ceramic Rubber Composite Lining with Steel Backing

This ceramic rubber lining consists of a steel backing plate with studs, designed for bolted installation onto facility surfaces.



Standard Specification

Overall Thickness (mm)	Size(mm)	Thickness of ceramic (mm)	Thick-ness of rubber (mm)	Thickness of steel backing Plate(mm)
35	300x300x35, 500x500x35	Φ21x21 ceramic cylinder	8	6
35	300x300x35, 500x500x35	Φ21x25 ceramic cylinder	5	5
50	300x300x50, 500x500x50	Φ32x32 ceramic cylinder	12	6
30	500x500x30	48x48x20 ceramic cube, 80x30x20 ceramic cube	5	5
45	500x500x45	48x48x35 ceramic cube, 80x30x35 ceramic cube	5	5
50	500x500x50	48x48x38/40 ceramic cube 80x30x38/40 ceramic cube	6/5	6/5

Customized sizes are available.

